

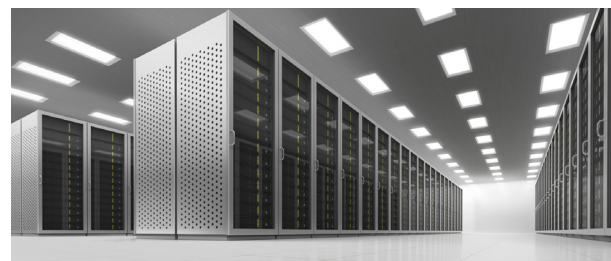
Priasoft Migration Suite for Exchange™ 6.5

with new
support for

 Office 365

The industry's leading Exchange migration software that helps your company simplify the complexity and deliver a successful migration.

Exchange migrations can impact many critical components of a business and place heavy workloads on administrative and support teams, depending on the tools being used and the ability to foresee potential issues and risks. Companies of all sizes have trusted Priasoft to deliver true Exchange-to-Exchange solutions since our first product was introduced to the market in 1999. Do not compromise the stability and security of your Exchange infrastructure. Trust only the Experts in Exchange migration.



What is Priasoft Migration Suite for Exchange 6.5?

Exchange Migration Suite 6.5 is our latest deployable solution that has been built on over 15 years of Exchange experience and assisting businesses with navigating the complexity of a migration. We remain focused on delivering the industry's most flexible and highest performing solution for businesses of all sizes. The software comes easy-to-deploy and use, even if it is your first migration.

Key Benefits



Dry-Run Modeling

Model migrations start-to-finish to ensure 100% success. Flush out potential issues prior to a production run and get accurate time lines. No other solution has this feature.



Flexibility via Backfill Technology

Quickly migrate users with the data they need now and then remaining data on your schedule.



Unmatched Migration Performance

Migration speeds up to 10x faster than any other solution via multi-threaded parallel processing engine and our patent pending CAS load-balancing technology.



Complete Reporting and Analytics

Keep aware of critical KPI's through all phases and aspects of the migration process with our intuitive and easy to use controls and dashboard feature.

Who is it for?

Built from the ground up to deliver unmatched performance and unrivaled flexibility, PMSE 6.5 helps solve the migration challenges for big and small businesses alike, whether it is 20 mailboxes or 200,000.

Key Features

- Support for all migration scenarios
- Fast and reliable migrations compared to other solutions
- Dry Run Technology
- Mailbox Rollback & Data Protection
- Outlook Profile updates
- Easy to deploy solution
- Simple to use
- "Nothing-Lost" Migration technology
- Policy-based and phased migration
- Automatic update of end user workstations after migration
- Full mailbox delegate migration
- Support for foreign locales and non-English installations

Don't leave a successful migration to chance

Many other migration solutions on the market are very expensive, require you to have two or more weeks of consulting time and pay extra for tools that are not included in their main offering. Other tools are merely a "wrapper" on top of Microsoft Migration Tools with limited functionality and support offerings.

Only Priasoft offers a complete solution, built from the ground up, with more than 15 years of Exchange Migration experience. When you purchase Priasoft Migration Suite for Exchange 6.5, you are provided every tool to make your migration fast, cost-effective, easy to deploy and manage. Don't take unnecessary risks with your Migration project. Trust the experts at Priasoft to help you simplify the complexity and deliver a successful migration.

Main Suite Features

Wizard Interfaces

Most of the tools in the Priasoft solution use wizard style interfaces in order to provide targeted and self-describing guidance through the tools making it easy to navigate and perform essential tasks quickly and effectively.

Migration Console

While a migration is executing, key stats that help indicate progress and performance are presented in an easy and intuitive console. Lists are exportable to Microsoft Excel and notifications can be set up to alert team members.

Multi-Process Execution

Utilize a much larger percentage of a computer's CPU during a migration by way of executing multiple concurrent processes and creating failure isolation that will not break or affect other tasks during the process.

Unparalleled Version Support

Support for every version of Microsoft Exchange, from 5.5 through 2016. One solution can cover all scenarios including companies that merge or acquire; they can simply just repeat the migration process and training remains the same.

Outlook Profiles

Reduce the need for manual configuration of user profiles with Outlook Profile Manager. Support for every version of Outlook since Outlook 97 is included and the solution can be automated to update thousands of clients the day after a migration.

Delegate Support

Utilize self-balancing technology through migration batching that automatically reanalyzes all migrated accounts for delegates if the relationships are somehow separated temporarily. They are restored automatically during the next batch.

2-Pass Migration Option

Migrate large databases to a new platform in less than 48 hours with a "cut-over pass", a subset of user data that is essential, and then a "backfill pass", the balance of what is remaining on a set schedule.

Calendar Migration

One of the most critical features of Exchange, our solution properly migrates and preserves essential features such as sharing and reminders while still allowing for user modification after the migration is complete.

Scripting Support

Set the solution to call scripts before and/or after each mailbox to create a truly atomic process that can be developed per account and all aspects tied to a user. Scripting allows for customization that is triggered off the migration.

What is included

Mailbox Migration Manager

This Exchange-to-Exchange mailbox migration application allows you to choose multiple migration scenarios, based on your Exchange environment. You can migrate mailboxes, calendars, delegates, send on behalf of permissions, rules, folders, and mailbox features such as Out-of-Office immediately or during scheduled migration windows. Migrate from 2003 or higher to any version of Exchange, or even Office 365.

Collaboration Suite for Exchange

This is Priasoft's latest product offering that supports GAL synchronization for Exchange 2000, 2003, 2007, 2010, and 2013. The Priasoft Collaboration Suite for Exchange simplifies enablement of free/busy lookup via the Exchange 2010 Availability Service. With the Collaboration Suite for Exchange, end users experience a single view of GAL information, even if some users are in separate Exchange organizations. This capability is particularly useful during mergers and acquisitions, or during coexisted Exchange migrations.

Public Folder Migration & Synchronization

Supports public folder migration between Exchange 5.5, 2000, 2003, 2007, 2010, and 2013 and Office 365 based organizations.

Profile Update Manager

This allows Outlook client profiles to be redirected post migration without the need to 'touch' each desktop as part of the migration process.

Profile Update Monitor

The Priasoft Profile Update Manager is the only complete solution in the market for automating updates of your Outlook clients' profiles and includes the Real-Time Profile Update Monitor that gives you visibility to monitor the update process – so you always know where you are in the process giving you the ability to be proactive rather than reactive!

Mailbox Rollback Utility

The mailbox rollback utility allows you to quickly undo the migration changes of source Exchange mailboxes post migration should the need arise.

Corporate Headquarters

60 E. Rio Salado Parkway | 9th Floor | Tempe, AZ 85281
TEL: 1.480.656.7402
FAX: 1.480.366.5801
EMAIL: sales@priasoft.com

www.priasoft.com

About Priasoft

As a trusted Microsoft Partner, we bring the expertise, software, and support to help you successfully transition your infrastructure safely, securely, and with reduced risk.

Copyright © 2015, Priasoft Inc. and/or its affiliates and partners. All rights reserved. Office365 logo is a registered trademark of Microsoft Corporation. This document is for informational purposes only and the contents hereof are subject to change without notice. This information should not be considered a substitute for independent, professional advice. This document is not warranted to be error-free, nor subject to any other warranties or conditions, whether expressed orally or implied in law. This document may not be reproduced or transmitted in any form or by any means, electronic or mechanical, for any purpose, without our prior written permission. Absent fraud, we disclaim all liability for any reliance you choose to place on any of the information provided here.